

Expand your horizons in the

ISP

Integrated Science Program

Our goal is to be innovative,
while training tomorrow's scientific leaders.

For entry
October 2018
applications from
Fall 2017

The ISP offers
prospective students
the opportunity to study
across a vast range
of scientific
fields taught in the world's
most widely used
language.

SAPPORO

HAKODATE

TOKYO

OSAKA

HOKKAIDO

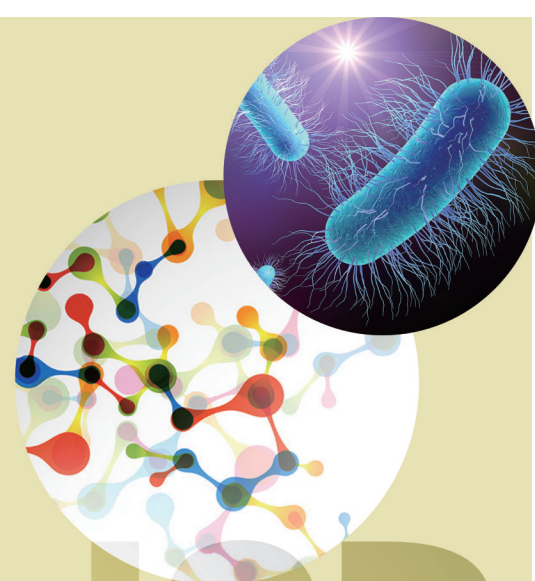


Integrated Science Program
Division of International Students
International Affairs Department
Hokkaido University
Kita 15, Nishi 8, Kita-ku, Sapporo, Japan
Program website: <https://www.oia.hokudai.ac.jp/isp/>

Hokkaido is the northernmost region of Japan.
The university is located in the city of Sapporo,
the largest on the island and the fourth largest in the country.

Course details

- Program includes bachelors and masters components, with the possibility of graduation in 5 years.
- The science course is given in English, with additional Japanese language classes to support you in your daily life and future career.
- You will learn not only academic but also business and communication skills.
- Financial support and scholarship opportunities.



ISP
Integrated Science Program



Three core sciences, multiple options for specialization

Undergraduate students will focus their studies in the fields of physics, chemistry and biology. Later in their postgraduate studies students will have the opportunity to specialize in one of several topic areas and work with the world leading research groups of Hokkaido University, ranked 25th in the QS University Rankings in Asia.

Engineering

Physics

Astronomy

Chemistry

Medical Science

Biology

Environmental Science

Planetary Science

Specialized postgraduate
study opportunities

Physical
Science

Chemical
Science

Biological
Science

Broad undergraduate
science foundation

ISP Faculty Members

The courses in the ISP will be provided by an international team of faculty members from a range of backgrounds across the entire scientific spectrum. The cosmopolitan nature of Hokkaido University offers a welcoming and encouraging environment for international students and is fully committed to helping students develop an exceptional skillset for future employment.



Integrated Science Program
Division of International Students
International Affairs Department
Hokkaido University
Kita 15, Nishi 8, Kita-Ku, Sapporo, Japan
Program website: <https://www.oia.hokudai.ac.jp/isp/>



@ISP Hokudai



Integrated
Science Program



HOKKAIDO
UNIVERSITY

The Integrated Science Program at Hokkaido University is a cross-disciplinary educational science program for international students interested in pursuing a degree in the natural sciences. The program's strong cross-disciplinary nature aims to give students an excellent broad scientific education across the core scientific disciplines (biology, chemistry, and physics), while allowing them to specialize in their chosen fields in later years in accordance with their own interests. While students main scientific studies are entirely in English, a multitude of additional courses will be available in the liberal arts and Japanese language to ensure students receive a rich and fulfilling education while at Hokkaido University.

Key Characteristics:

- 1) Study at one of Japan's oldest and most prestigious universities.
- 2) English language course taught by a diverse international faculty.
- 3) A range of scholarships available.
- 4) Waiver of the enrollment fee for students admitted in October 2017.



ISP Scholarships and Fees

| | Degree | Application Fee | Enrollment Fee | Tuition | Scholarship |
|-----------------------------------|----------|-------------------|--------------------|-----------------------|-------------------------------|
| ISP-fully supported students | Bachelor | ¥17,000 ¥5,000 | ¥282,000 Waiver | Waiver × 3.5 years | ¥100,000/Month × 3.5 years |
| | Master | ¥30,000 Waiver | ¥282,000 Waiver | Waiver × 2 years | ¥100,000/Month × 2 years |
| ISP-partially supported students* | Bachelor | ¥17,000 ¥5,000 | ¥282,000 Waiver | Waiver × 1 year* | ¥50,000/Month × 1 year* |
| | Master | ¥30,000 Waiver | ¥282,000 Waiver | Waiver × 1 year | ¥50,000/Month × 1 year |
| Regular students | Bachelor | ¥17,000 ¥5,000 | ¥282,000 Waiver | ¥535,800 | None |
| | Master | ¥30,000 Waiver | ¥282,000 Waiver | ¥535,800 | None |

* ISP-partially supported students will be exempt from tuition fees and will be provided with a scholarship for the initial 6 months of study.

For more details, please visit <https://www.oia.hokudai.ac.jp/isp/>



Living and Learning in Sapporo

Historical University

Hokkaido University was founded in 1876 in the city of Sapporo, Hokkaido. The university boasts internationally recognized research in science and technology, excelling in areas such as chemistry and materials science.

Excellent Education & Research

According to the QS World University Rankings, Hokkaido University ranks within the top 100 in 7 fields. Emeritus professor Akira Suzuki was awarded the 2010 Nobel Prize in Chemistry for his innovative research.

Beautiful Campus

Praised as Japan's most beautiful university campus, Hokkaido University hosts many areas of picturesque greenery, which attracts tourists to enjoy the scenery all throughout the year.

Cosmopolitan City

Sapporo is Japan's 5th largest city. The city is spacious but also easy to navigate, with an extensive public transport network. The city is home to many parks and gardens, as well as plentiful opportunities to shop and soak up the metropolitan lifestyle.



International Student Support

International Students Support Desk

We provide a support desk staffed with international students. If, for example, you have trouble reading Japanese documents, or do not understand procedures at the ward office, the support desk is happy to help.

Counseling

A bilingual counselor offers advice regarding difficulties you may have such as adjusting to life in Japan, academic studies, and career guidance for your future after university.

Supplies

Amenities and household supplies for your daily life and study can be provided for free of charge by kindly donations and support from local residents and companies.

Accommodation

Rooms in university owned dormitories are offered to ISP students in their freshman year. These include social communal areas, kitchens and washing amenities. Although Sapporo is ranked in the top 3 cities in Japan to live, the cost of living is especially low for a city of its size.



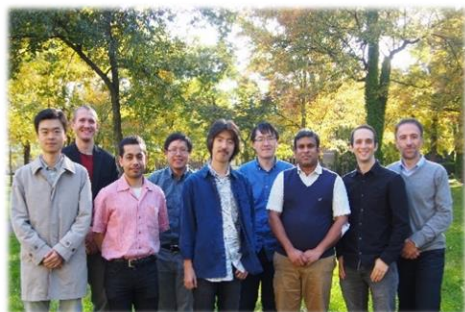
2018 Enrollment

Online application period

Fall 2017 (Details will be announced later)

Selection methods

Students will be selected based on their application materials and online interviews (e.g. Skype).



Integrated Science Program at Hokkaido University

International Affairs Department, Hokkaido University

☎ +81-(0)11-706-8053

isp@oia.hokudai.ac.jp

For more details, please visit :

<https://www.oia.hokudai.ac.jp/isp/>

Facebook: Hokkaido University's Integrated Science Program



@ISPHokudai

